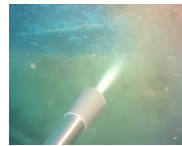


Diesel PRO High Pressure Unit

99 LPM @ 235 bar

The diesel engine driven HDMD235_99 high pressure unit is built on a skid with stainless steel pump head for professional offshore ROV and Commercial diving, cavitation cleaning, operations. The high volume of 99 LPM provides cleaning speed at 235 bar for extremely fast and powerful removal of thick marine growth, corrosion and instable coatings. The HDMD235_99 is compatible with double CW450's, CW550 Pro retro gun, double rotor cleaners and double underwater tools.



Specifications

Compatible with: 4x CW300's, Triple 350's, Double CW450's, CW550, ROV Lances, Double Rotor Cleaners, Double Underwater Tools

Max. Pressure: 235 bar (3,408 psi)

Max. flow: 99 LPM (26.1 GPM)

Power: 74HP Iveco diesel engine

Weight: 950kg (2,095 lbs)

Dimensions: 280x165x85160cm
(110x65x63")

Features

- Removes hard fouling, debris, corrosion and coatings
- Drives multiple underwater tools
- Stainless steel pump head
- Heavy duty skid
- Big cartridge filter at pump inlet
- Pressure valve
- Motor thermal protection
- Hour counter
- Emergency stop
- Manual throttle control